
VVDI PROG User Manual

Version: 4.7.3

CONTENT

1. Document Declaration.....	3
2. Safety Precautions.....	4
3. Noun explanation.....	5
4. Hardware Overview.....	6
4.1. Device specification.....	6
4.2. Device units.....	7
4.3. Unit description.....	11
5. Software Overview.....	15
5.1. Introduction.....	15
5.2. Software interface.....	16
5.3. Driver installing.....	18
5.4. Online update.....	19
6. Support Type List.....	20
6.1. MEMORY.....	20
6.2. MCU.....	22
7. Support Model List.....	60
7.1. ECU.....	60
7.2. IMMOBILIZER.....	62
7.3. DASHBOARD.....	66
7.4. REMOTE.....	71
7.5. AIRBAG.....	72
7.6. OTHER.....	73

1. Document Declaration

Please view the following declaration carefully:

- ◆ VVDI PROG User Manual can help you maintenance vehicles with device. Please DON' T used for illegal purpose, Please follow the national laws
- ◆ VVDI PROG User Manual can help you how to use VVDI PROG software, please view carefully
- ◆ Any illegal use VVDI PROG Device or User Manual, The user should take all risks, the company does not assume any responsibility
- ◆ This User Manual according to V4.7.3, new version software please refer to corresponding version User Manual

2. Safety Precautions

To prevent personal injury or device damage, please read the User Manual carefully before operation and adopt the following safety precautions:

- ◆ Always operate the device under safe condition
- ◆ Ensure work condition with good ventilation, because of the harmful gas generated when soldering
- ◆ Soldering on anti-static & constant temperature solder station
- ◆ Disconnect power supply before soldering
- ◆ Ensure solder station connected to ground
- ◆ Keep the device clean and dry, Do not place in any wet, oily, dusty area

3. Noun explanation

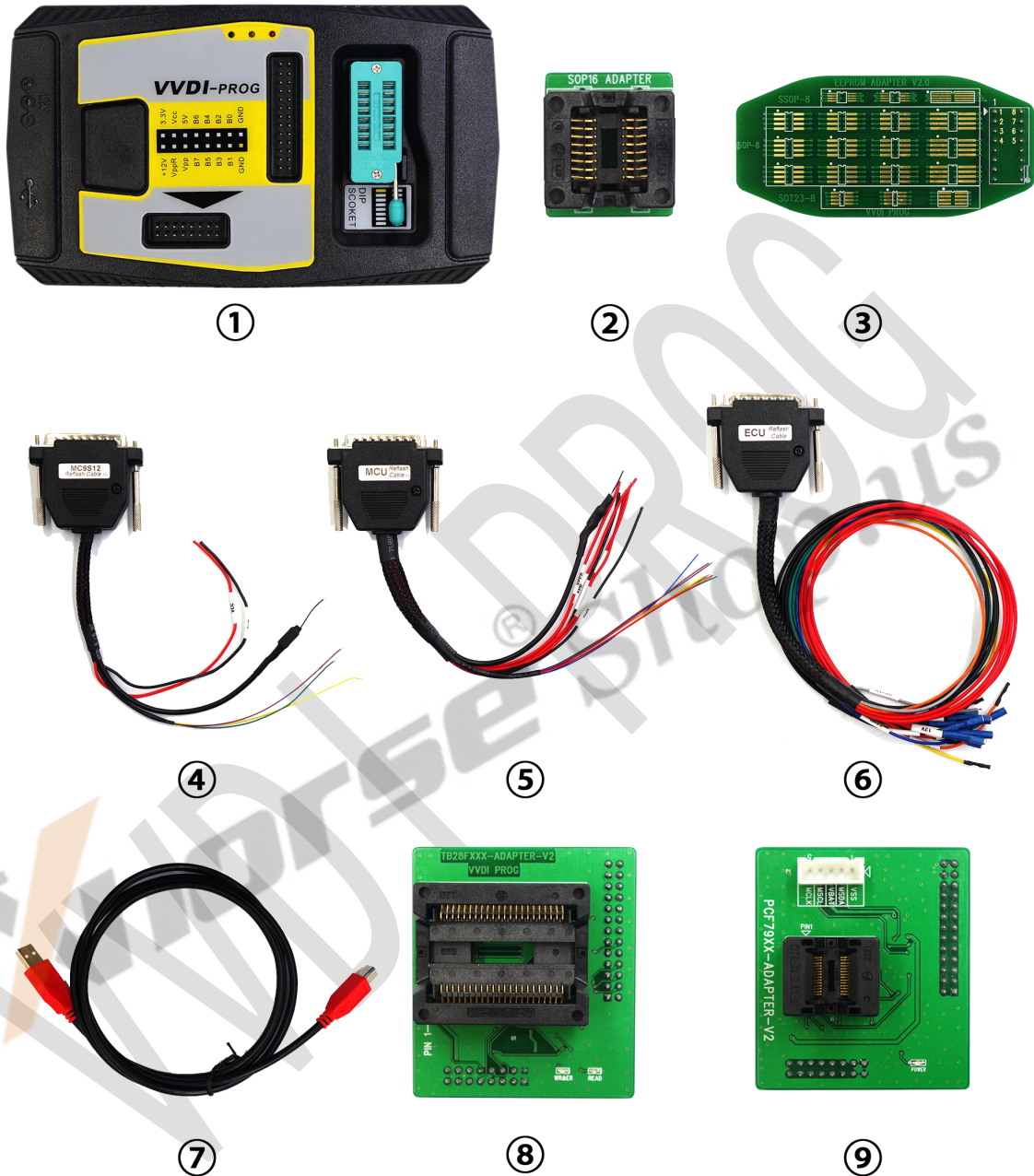
- ◆ EEPROM: Electrically Erasable Programmable Read-Only Memory, usually store the generated data of chip running
- ◆ FLASH: Flash EEPROM Memory, usually store the program of chip
- ◆ D-FLASH: Data Flash, the same function with EEPROM
- ◆ P-FLASH: Program Flash, the same function with FLASH
- ◆ ROM: Read-Only Memory, usually store the program of chip, can not erase or write
- ◆ EEE: Emulated EEPROM, the same function with FLASH
- ◆ POF: Program Once Field, can write data once, can not erase or rewrite

4. Hardware Overview

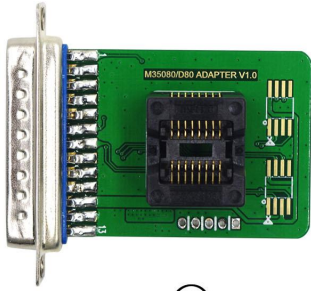
4.1. Device specification

option	Specification		
Working temperature	-20 ~ 70 °C (-4 ~ 158 °F)		
Storage temperature	-40 ~ 85°C (-40~ 185°F)		
USB interface	USB 2.0		
Power adapter	12V / 2A		
Consumption	1W		
Device dimensions	L	W	H
	146 mm	85 mm	28 mm
Package dimensions	L	W	H
	220 mm	155 mm	80 mm
Net weight	180 g		
Gross weight	530 g		

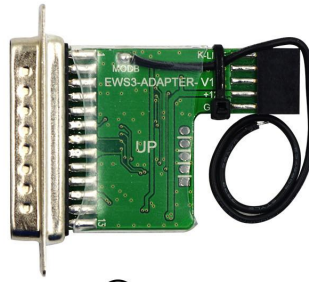
4.2. Device units



1. VVDI PROGdevice
2. EEPROM socket
3. EEPROM adapter
4. MC9S12 Reflash Cable V1
5. MCU Reflash Cable V3
6. ECU Reflash Cable
7. USB Type-B Cable
8. TB28FXXX adapter (optional)
9. PCF79XX adapter (optional)



10



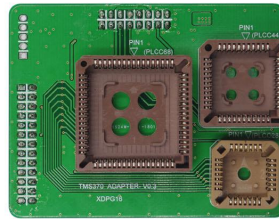
11



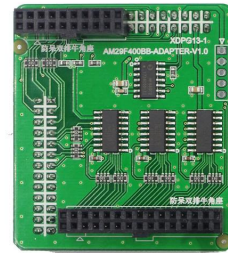
12



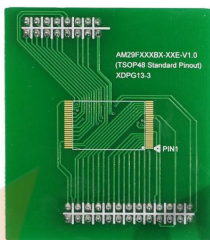
13



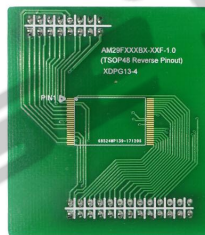
14



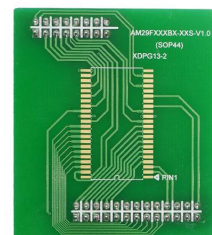
15



16

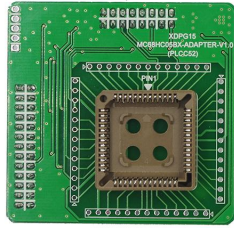


17

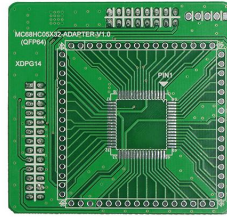


18

- 10. M35080/D80 adapter (optional)
- 11. EWS3 adapter (optional)
- 12. EEPROM CLIP adapter (optional)
- 13. EWS4 adapter (optional)
- 14. TMS370 adapter (optional)
- 15. AM29FXXX adapter1 (optional)
- 16. AM29FXXX adapter3 (optional)
- 17. AM29FXXX adapter4 (optional)
- 18. AM29FXXX adapter2 (optional)



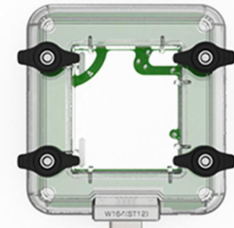
19



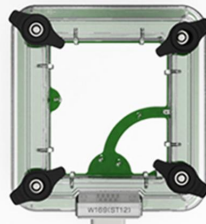
20



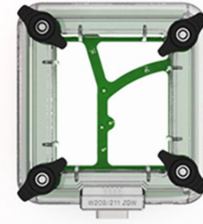
21



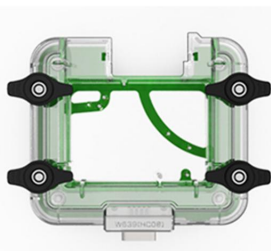
22



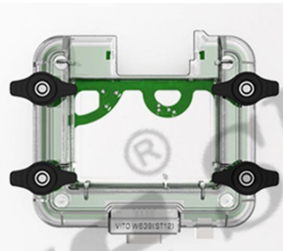
23



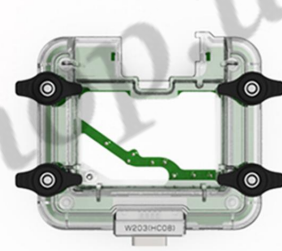
24



25



26



27

- 19. MC68HC05BX adapter (optional)
- 20. MC68HC05X32 adapter (optional)
- 21. SPRINTER(ST12) adapter (optional)
- 22. W164(ST12) adapter (optional)
- 23. W169(ST12) adapter (optional)
- 24. W209/211 ZGW adapter (optional)
- 25. W639(HC08) adapter (optional)
- 26. VITO W639(ST12) adapter (optional)
- 27. W203(HC08) adapter (optional)



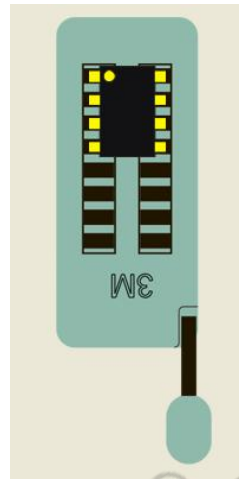
- 28. W209/211(HC12) adapter (optional)
- 29. W211(ST12) adapter (optional)
- 30. W215/W220/W230 adapter (optional)

Unit description

1. 16 Pin DIP socket

Function: Read EEPROM chips

Use method: Follow the image direction when insert the DIP chip (PIN1 as yellow point show as the picture); SOP chip need soldering on 16Pin adapter first, then insert the chip follow the image direction



2. MC9S12 Reflash Cable V1

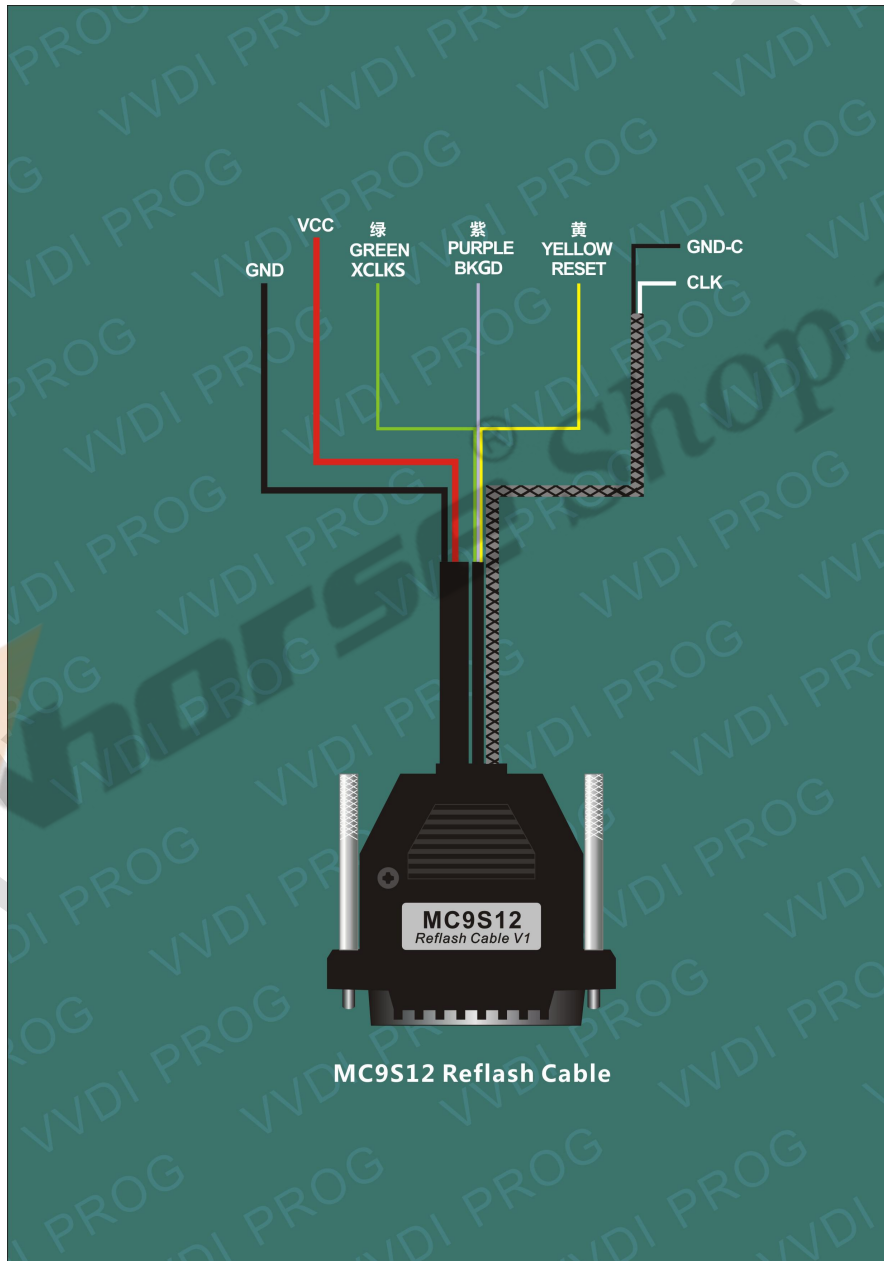
Function: Read & Write MC9S08, MC9S12 series chips, current version is V1

Use method: Soldering the line on pin of chip before read & write

Notes:

(1) Please check all connection lines, ensure correct and reliable connection

(2) Please Don't lengthen CLK and GND-C line, maybe cause read data failed



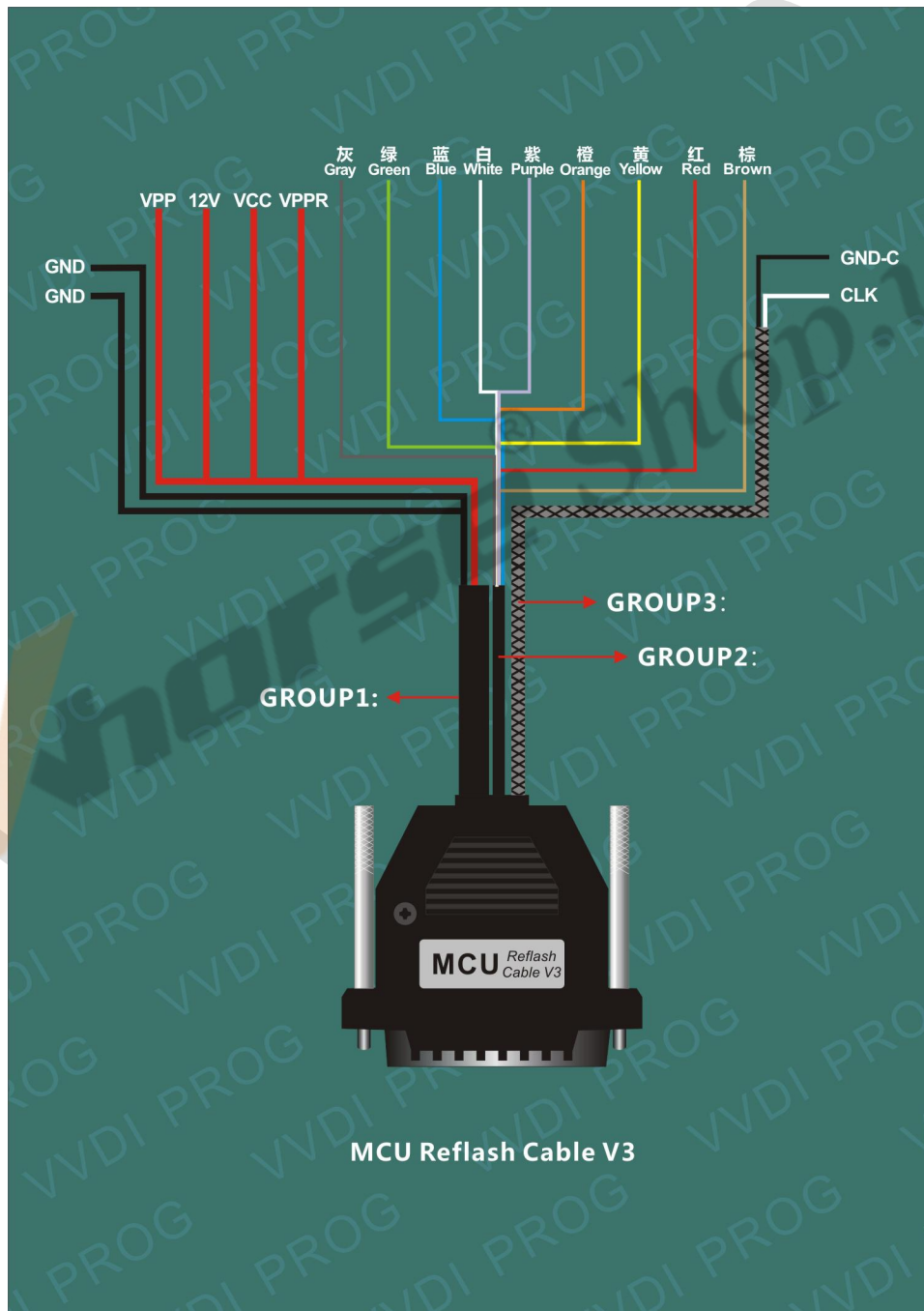
3. MCU Reflash Cable V3

Function: Read & Write MC68HC(9)12, V850, H8X, R5C series chips, current version is V3

Use method: Soldering the line on pin of chip before read & write

Notes:

- (1) Please check all connection lines, ensure correct and reliable connection
- (2) Please Don't lengthen CLK and GND-C line, maybe cause read data failed



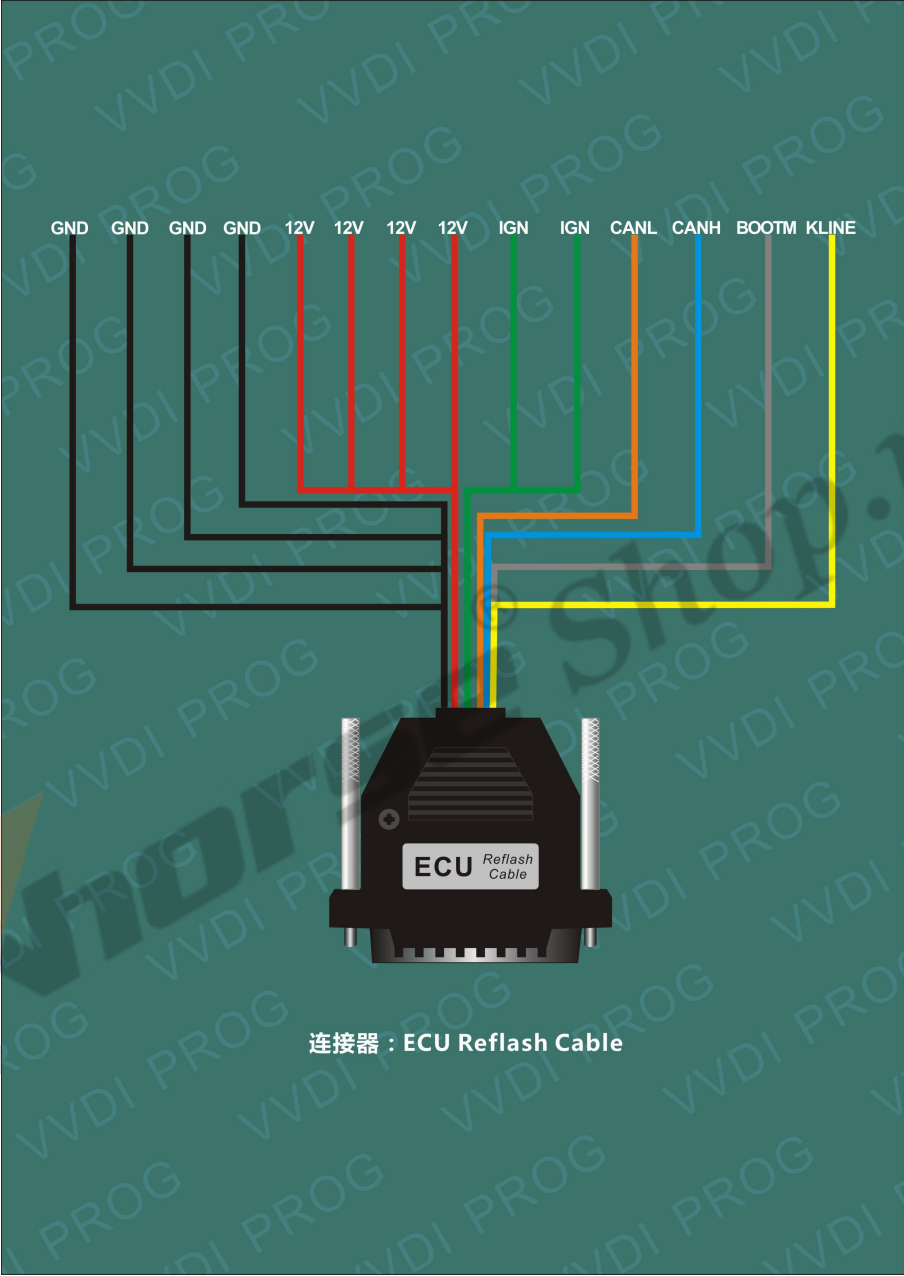
4. ECU Reflash Cable

Function: Read & Write engine ECU

Use method: Connect the ECU and R&W

Notes:

Please check all connection lines, ensure correct and reliable connection

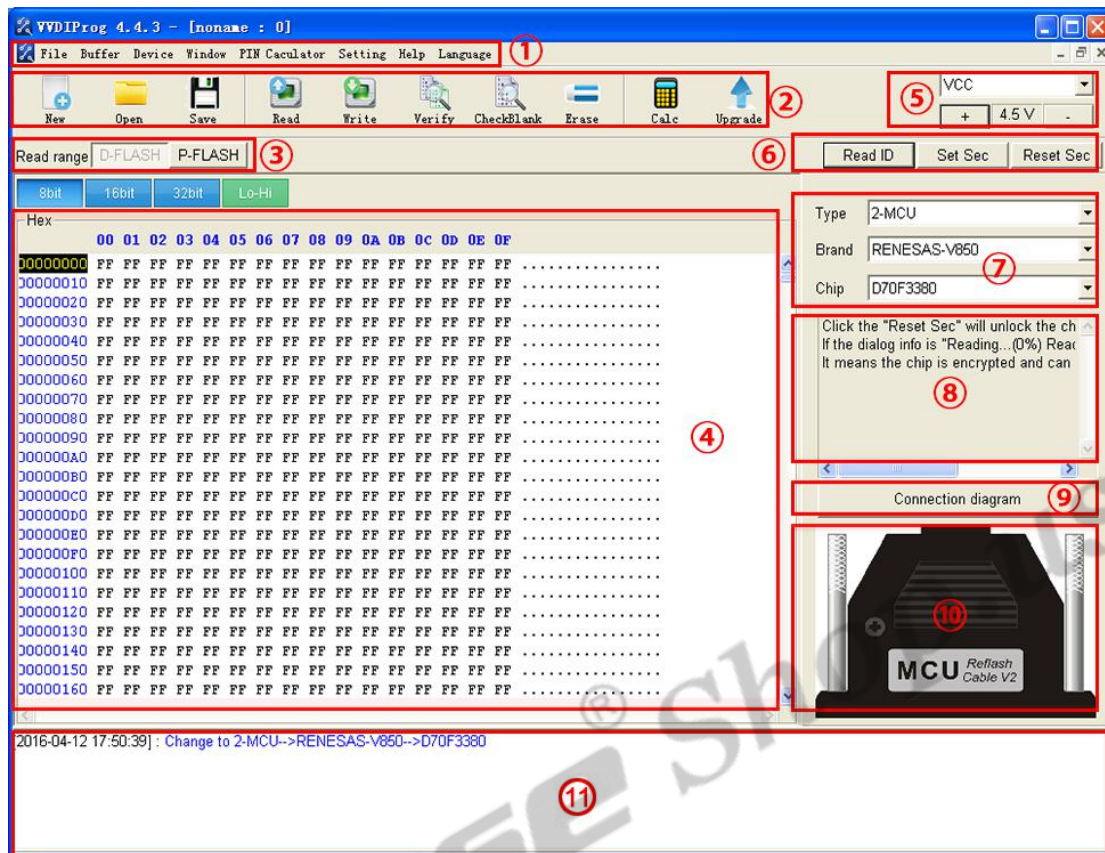


5. Software Overview

5.1. Introduction

- ◆ Support R&W lots of chips, include MC9S08 series, MC68HC(9)12series, MC9S12series, V850series, H8Xseries, R8Cseries, PCF79XXseries and most eeprom chips etc .
- ◆ Support chip data verify, checkblank function
- ◆ Support data file compare function
- ◆ Support R&W BMW N20, N55 ECU(show ISN directly)
- ◆ Stable R&W MC9S12XE series chips(5M48H/1N35H/2M53J/3M25J etc.)
- ◆ Support renew PCF79XX remote, currently support BMW E/F series
- ◆ Lots of connection diagram

5.2. Software interface



1. Operation options
 - File : Load data file
 - Buffer : Support copy, paste, search, fill function
 - Device : Support chip read, write, erase operation
 - Window : Compare two data files
 - Setting : Read&Verify, Write&Verify, Erase&Check Blank configuration
 - Language : Change the language, current support English, Chinese, Polish, Arabic, Czech, Spanish, French, Italian, Portuguese, Russian, Turkish
2. General options

Provide General function buttons, simple and easy for operation, include: new, open, save, read, write, verify, check blank, erase, calculator & upgrade
3. Read range

Parts of chips include several data areas, for example EEPROM, FLASH and etc. click on the button select read range
4. Data display

Display the read data or load data, include hex and ASCII format
5. Power configuration

Display the status of power (VCC, VPP, 12V), support change the voltage of VCC and VPP (The default voltage usually not need to change)

6. Special function options
Provide chips special function, for example parts of chips have read chip ID, set security, reset security etc .
7. Chip option
Select right option according to type,brand and chip
8. Option Information
Display parameter information of current option
9. Connection diagram button
Click on button, get the connection diagram of current chip
10. adapter Type
Display needed adapter of current option
11. Operation Information
Display operation information and saved in “log.bin” file

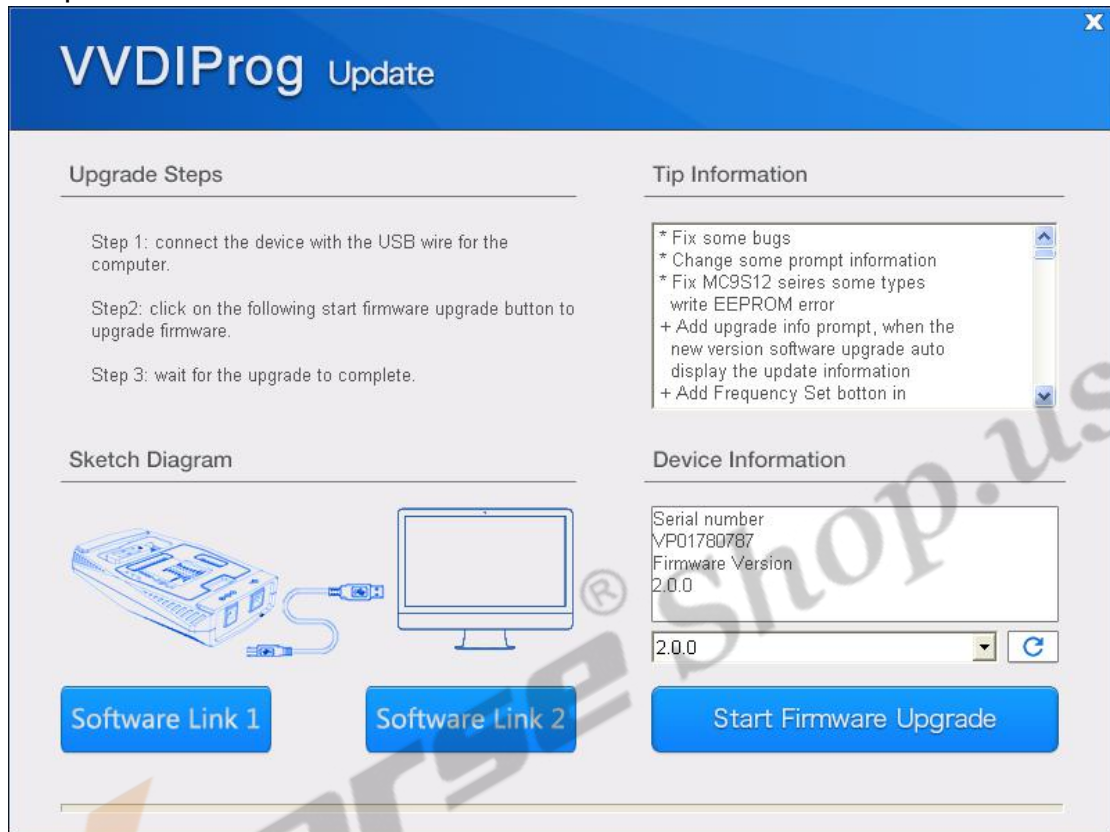
5.3. Driver installing

The driver install software saved in “driver” folder, include 2009 and 2016 version (recommend select 2009 version)



5.4. Online update

- ◆ This function require internet support
- ◆ Click the “Upgrade” button enter the upgrade interface, show as following picture



- ◆ Enter update interface,if software show”communication with server failed”,please close your Anti-virus and computer firewall and retry. Ifsoftware show”unable to find equipment”,please reconnect device
- ◆ Tip information show the latest software version and upgrade information
- ◆ Device information show the device SN, device firmware version and the latest firmware version
- ◆ Firmware upgrade steps:
 1. Select the firmware version
 2. Click “Start Firmware Upgrade” button
 3. Don’t close or pull out USB cable before upgrade finished
- ◆ Software upgrade steps:
 1. Click “Software Link 1” or “Software Link 2” button, download software from the web
 2. Extract the file

6.Support Type List

6.1. MEMORY

MFRS	TYPE	SUPPORT	REMARK
AMD	AM29FXXXB	⚙	Need AM29FXXXB adapter
	AM29BDD160GBXXE	⚙	Need PQFP80_FLASH adapter
	S29CD016GXXF01	⚙	Need PQFP80_FLASH adapter
	S29CD032GXXF01	⚙	Need PQFP80_FLASH adapter
ATMEL	AT24CXX	⚙	
	AT25XXX	⚙	
	AT93CX6	⚙	
CATALYST	CAT24C/WXX	⚙	
	CAT10XX	⚙	
	CAT93CX6[A]	⚙	
EXEL	XL[S]24CXX	⚙	
	XL[S]93CX6	⚙	
FAIRCHILD	FM/NM24CXX	⚙	
	FM93CSX6	⚙	
	NM93CX6	⚙	
	NM93CSX6	⚙	
INTEL	AB28FXXX	⚙	Need TB28FXXX adapter
	PA28FXXX	⚙	Need TB28FXXX adapter
	TB28FXXX	⚙	Need TB28FXXX adapter
MICROCHIP	24AAXX	⚙	
	24[L]CXX	⚙	
	25LCXX	⚙	
	93C/LC/AAX6A	⚙	6pin SOT23/8pin sop package
	93C/LC/AAX6B	⚙	6pin SOT23/8pin sop package
	93C/LC/AAX6C	⚙	
MITSUBISHI	M6M800X1	⚙	
ST	D80/D160	⚙	Support erase the first 32 bytes
	M24CXX	⚙	
	M25PXX	⚙	
	M35080	⚙	Need M35080/D80 adapter
	M95XXX	⚙	

	M95XXX	⚙	
	M93CX6	⚙	
	M93SX6	⚙	
	M95M0X	⚙	
	ST24C/E/WXX	⚙	
	ST25C/EXX	⚙	
	ST93CSX6/X7	⚙	
	M58BW016XX	⚙	Need PQFP80_FLASH adapter
	ST95P0X	⚙	
TOSHIBA	TC8910X	⚙	
	TC97010	⚙	
XICOR	X24C01	⚙	
	X504X	⚙	
SEIKO	S29X90	⚙	

Notes: ⚙ Already Support, ● Support Soon

6.2. MCU

MFRS	TYPE	SUPPORT	REMARK
RENESAS V850	D70F3231	⚙	
	D70F3232	⚙	
	D70F3233	⚙	
	D70F3234	⚙	
	D70F3235	⚙	
	D70F3236	⚙	
	D70F3237	⚙	
	D70F3238	⚙	
	D70F3239	⚙	
	D70F3333	⚙	
	D70F3334	⚙	
	D70F3335	⚙	
	D70F3336	⚙	
	D70F3340	⚙	
	D70F3341	⚙	
	D70F3342	⚙	
	D70F3343	⚙	
	D70F3344	⚙	
	D70F3345	⚙	
	D70F3346	⚙	
	D70F3347	⚙	
	D70F3348	⚙	
	D70F3350	⚙	
	D70F3351	⚙	
	D70F3352	⚙	
	D70F3353	⚙	
	D70F3354	⚙	
	D70F3355	⚙	
	D70F3356	⚙	
	D70F3357	⚙	
	D70F3358	⚙	
	D70F3364	⚙	
D70F3365	⚙		
D70F3366	⚙		

Notes: ⚙Already Support, ●Support Soon

MFRS	TYPE	SUPPORT	REMARK
RENESAS V850	D70F3367	☼	
	D70F3368	☼	
	D70F3370A	☼	
	D70F3371	☼	
	D70F3372	☼	
	D70F3373	☼	
	D70F3374	☼	
	D70F3375	☼	
	D70F3376A	☼	
	D70F3377A	☼	
	D70F3378	☼	
	D70F3379	☼	
	D70F3380	☼	
	D70F3381	☼	
	D70F3382	☼	
	D70F3383	☼	
	D70F3384	☼	
	D70F3385	☼	
	D70F3402	☼	
	D70F3403	☼	
	D70F3403A	☼	
	D70F3416	☼	
	D70F3417	☼	
	D70F3421	☼	
	D70F3422	☼	
	D70F3423	☼	
	D70F3424	☼	
	D70F3425	☼	
	D70F3426	☼	
	D70F3427	☼	
	D70F3433	☼	
	D70F3451	☼	
D70F3452	☼		
D70F3453	☼		
D70F3454	☼		
D70F3464	☼		

Notes: ☼Already Support, ●Support Soon

MFRS	TYPE	SUPPORT	REMARK
RENESAS V850	D70F3465	⚙	
	D70F3466	⚙	
	D70F3469	⚙	
	D70F3470	⚙	
	D70F3471	⚙	
	D70F3472	⚙	
	D70F3505A	⚙	
	D70F3506	⚙	
	D70F3507	⚙	
	D70F3508	⚙	
	D70F3509	⚙	
	D70F3522	⚙	
	D70F3523	⚙	
	D70F3524	⚙	
	D70F3525	⚙	
	D70F3526	⚙	
	D70F3529	⚙	
	D70F3532	⚙	
	D70F3535	⚙	
	D70F3536	⚙	
	D70F3537	⚙	
	D70F3610	⚙	
	D70F3611	⚙	
	D70F3612	⚙	
	D70F3613	⚙	
	D70F3614	⚙	
	D70F3615	⚙	
	D70F3616	⚙	
	D70F3617	⚙	
	D70F3618	⚙	
	D70F3619	⚙	
	D70F3620	⚙	
D70F3621	⚙		
D70F3622	⚙		
D70F3624	⚙		
D70F3628	⚙		
D70F3634	⚙		

	D70F3700	⚙	
	D70F3701	⚙	
	D70F3702	⚙	
	D70F3703	⚙	

Notes: ⚙ Already Support, ● Support Soon



MFRS	TYPE	SUPPORT	REMARK
RENESAS V850	D70F3704	☼	
	D70F3706	☼	
	D70F3707	☼	
	D70F3709	☼	
	D70F3710	☼	
	D70F3711	☼	
	D70F3712	☼	
	D70F3715	☼	
	D70F3716	☼	
	D70F3717	☼	
	D70F3718	☼	
	D70F3719	☼	
	D70F3720	☼	
	D70F3721	☼	
	D70F3722	☼	
	D70F3723	☼	
	D70F3724	☼	
	D70F3739	☼	
	D70F3740	☼	
	D70F3741	☼	
	D70F3742	☼	
	D70F3743	☼	
	D70F3744	☼	
	D70F3745	☼	
	D70F3746	☼	
	D70F3778	☼	
	D70F3779	☼	
	D70F3780	☼	
	D70F3781	☼	
	D70F3782	☼	
	D70F3783	☼	
	D70F3784	☼	
D70F3785	☼		
D70F3786	☼		
D70F3826	☼		
D70F3827	☼		

Notes: ☼Already Support, ●Support Soon

MFRS	TYPE	SUPPORT	REMARK
RENESAS V850	D70F3828	⚙	
	D70F3829	⚙	
	D70F3834	⚙	
	D70F3835	⚙	
	D70F3836	⚙	
	D70F3837	⚙	
	D70F4177	⚙	
	D70F4178	⚙	
	D70F4179	⚙	
	D70F4180	⚙	
	D70F3474A	⚙	
	D70F3475A	⚙	
	D70F3476A	⚙	
	D70F3477A	⚙	
	D70F3478A	⚙	
	D70F3479A	⚙	
	D70F3931B	⚙	
	D70F3932B	⚙	
	D70F3933B	⚙	
	D70F3934B	⚙	
	D70F3935B	⚙	
	D70F3936B	⚙	
	D70F3937B	⚙	
	D70F3938B	⚙	
	D70F3939B	⚙	
	D70F3480A	⚙	
	D70F3481A	⚙	
	D70F3482A	⚙	
	D70F3486A	⚙	
	D70F3487A	⚙	
	D70F3488A	⚙	
	D70F3925A	⚙	
	D70F3926A	⚙	
D70F3927A	⚙		
D70F3625	⚙		

Notes: ⚙ Already Support, ● Support Soon

MFRS	TYPE	SUPPORT	REMARK
RENESAS V850	D70F3529	☺	
	D70F3548	☺	
	D70F3549	☺	
	D70F3550	☺	
	D70F3551	☺	
	D70F3552	☺	
	D70F3553	☺	
	D70F3554	☺	
	D70F3555	☺	
	D70F3556	☺	
	D70F3557	☺	
	D70F3558	☺	
	D70F3559	☺	
	D70F3560	☺	
	D70F3561	☺	
	D70F3564	☺	
	D70F3570	☺	
	D70F3571	☺	
	D70F3572	☺	
	D70F3573	☺	
	D70F3574	☺	
	D70F3575	☺	
	D70F3576	☺	
	D70F3577	☺	
	D70F3578	☺	
	D70F3579	☺	
	D70F3580	☺	
	D70F3582	☺	
	D70F3583	☺	
	D70F3584	☺	
	D70F3585	☺	
	D70F3592	☺	
D70F4000	☺		
D70F4001	☺		
D70F4002	☺		

Notes: ☺Already Support, ●Support Soon

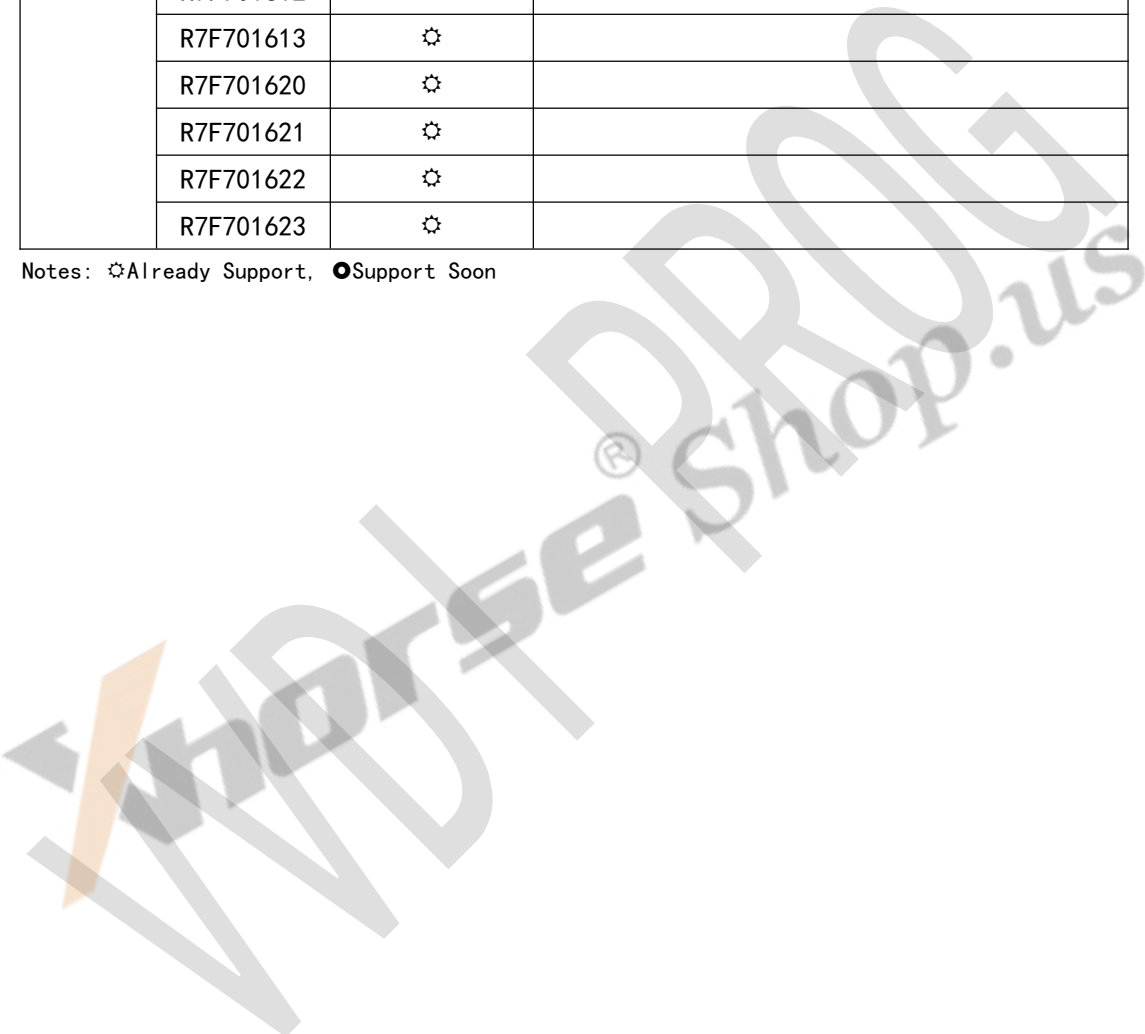
MFRS	TYPE	SUPPORT	REMARK
RENESAS V850	D70F4003	⚙	
	D70F4004	⚙	
	D70F4005	⚙	
	D70F4006	⚙	
	D70F4007	⚙	
	D70F4008	⚙	
	D70F4009	⚙	
	D70F4010	⚙	
	D70F4011	⚙	
	D70F4012	⚙	
	D70F3623	⚙	
	D70F3626	⚙	
	D70F3627	⚙	
	D70F3629	⚙	
	D70F3630	⚙	
	D70F3631	⚙	
	D70F3632	⚙	
	D70F3633	⚙	
	D70F3634	⚙	
	D70F3635	⚙	
D70F3636	⚙		
D70F3637	⚙		
D70F3638	⚙		
RENESAS RH850	R7F701002	⚙	
	R7F701003	⚙	
	R7F701006	⚙	
	R7F701007	⚙	
	R7F701008	⚙	
	R7F701009	⚙	
	R7F701010	⚙	
	R7F701011	⚙	
	R7F701012	⚙	
	R7F701013	⚙	
R7F701014	⚙		
R7F701015	⚙		
R7F701016	⚙		
R7F701017	⚙		

RENESAS RH850	R7F701018	⚙	
	R7F701019	⚙	
	R7F701020	⚙	
	R7F701021	⚙	
	R7F701023	⚙	
	R7F701024	⚙	
	R7F701025	⚙	
	R7F701026	⚙	
	R7F701027	⚙	
	R7F701028	⚙	
	R7F701029	⚙	
	R7F701030	⚙	
	R7F701033	⚙	
	R7F701034	⚙	
	R7F701040	⚙	
	R7F701041	⚙	
	R7F701042	⚙	
	R7F701043	⚙	
	R7F701044	⚙	
	R7F701045	⚙	
	R7F701046	⚙	
	R7F701047	⚙	
	R7F701048	⚙	
	R7F701049	⚙	
	R7F701050	⚙	
	R7F701051	⚙	
	R7F701052	⚙	
	R7F701053	⚙	
	R7F701054	⚙	
	R7F701055	⚙	
	R7F701056	⚙	
	R7F701057	⚙	
	R7F701401	⚙	
	R7F701A03	⚙	
R7F701402	⚙		
R7F701403	⚙		
R7F701404	⚙		
R7F701405	⚙		
R7F701406	⚙		

RENESAS RH850	R7F701407	⚙	
	R7F701408	⚙	
	R7F701410	⚙	
	R7F701411	⚙	
	R7F701412	⚙	
	R7F701422	⚙	
	R7F701423	⚙	
	R7F701428	⚙	
	R7F701430	⚙	
	R7F701431	⚙	
	R7F701432	⚙	
	R7F701542	⚙	
	R7F701543	⚙	
	R7F701544	⚙	
	R7F701545	⚙	
	R7F701546	⚙	
	R7F701547	⚙	
	R7F701548	⚙	
	R7F701549	⚙	
	R7F701552	⚙	
	R7F701553	⚙	
	R7F701557	⚙	
	R7F701560	⚙	
	R7F701561	⚙	
	R7F701562	⚙	
	R7F701563	⚙	
	R7F701564	⚙	
	R7F701565	⚙	
	R7F701566	⚙	
	R7F701567	⚙	
	R7F701568	⚙	
	R7F701569	⚙	
	R7F701572	⚙	
	R7F701573	⚙	
R7F701577	⚙		
R7F701580	⚙		
R7F701581	⚙		
R7F701582	⚙		
R7F701583	⚙		

RENASAS RH850	R7F701586	⚙	
	R7F701587	⚙	
	R7F701589	⚙	
	R7F701597	⚙	
	R7F701602	⚙	
	R7F701603	⚙	
	R7F701610	⚙	
	R7F701611	⚙	
	R7F701612	⚙	
	R7F701613	⚙	
	R7F701620	⚙	
	R7F701621	⚙	
	R7F701622	⚙	
	R7F701623	⚙	

Notes: ⚙ Already Support, ● Support Soon



MFRS	TYPE	SUPPORT	REMARK
RENESAS H8X	R5F61723	⚙	
	R5F61725	⚙	
	R5F61797	⚙	

Notes: ⚙ Already Support, ● Support Soon



MFRS	TYPE	SUPPORT	REMARK
RENESAS R8C	R5F21546E	⚙	
	R5F21547E	⚙	
	R5F21548E	⚙	
	R5F2154AE	⚙	
	R5F2154CE	⚙	
	R5F21546F	⚙	
	R5F21547F	⚙	
	R5F21548F	⚙	
	R5F2154AF	⚙	
	R5F2154CF	⚙	
	R5F21546G	⚙	
	R5F21547G	⚙	
	R5F21548G	⚙	
	R5F2154AG	⚙	
	R5F2154CG	⚙	
	R5F21546H	⚙	
	R5F21547H	⚙	
	R5F21548H	⚙	
	R5F2154AH	⚙	
	R5F2154CH	⚙	
RENESAS R32C	R5F6421D	⚙	
	R5F64216	⚙	
	R5F6421A	⚙	
	R5F64217	⚙	
	R5F6421B	⚙	
	R5F64218	⚙	
	R5F6421C	⚙	
	R5F64207	⚙	
	R5F6420B	⚙	
	R5F64206	⚙	
	R5F6420A	⚙	
	R5F64110	⚙	
	R5F64114	⚙	
	R5F64111	⚙	
	R5F64115	⚙	
	R5F64112	⚙	
R5F64116	⚙		

	R5F64165	⚙	
	R5F64166	⚙	
	R5F64167	⚙	
	R5F64168	⚙	
	R5F64169	⚙	
	R5F6417A	⚙	
	R5F6417B	⚙	
	R5F64175	⚙	
	R5F64185	⚙	
	R5F64176	⚙	
	R5F64186	⚙	
	R5F64177	⚙	
	R5F64187	⚙	
	R5F64178	⚙	
	R5F64188	⚙	
	R5F64179	⚙	
	R5F64189	⚙	
	R5F64116J	⚙	
	R5F64117J	⚙	
	R5F64118J	⚙	
	R5F64116K	⚙	
	R5F64117K	⚙	
RENESAS R32C	R5F64118K	⚙	
	R5F64116L	⚙	
	R5F64117L	⚙	
	R5F64118L	⚙	
	R5F64116M	⚙	
	R5F64117M	⚙	
	R5F64118M	⚙	
	R5F6442F	⚙	
	R5F6445F	⚙	
	R5F6442H	⚙	
	R5F6445H	⚙	

Notes: ⚙ Already Support, ● Support Soon

MFRS	TYPE	SUPPORT	REMARK
MOTOROLA MC68HC (7) 05	MC68HC05B16	⚙	Need use MC68HC05BX adapter
	MC68HC705B32	⚙	Need use MC68HC05BX adapter
	MC68HC05X32	⚙	Need use MC68HC05X32 adapter
	MC68HC705X32	⚙	Need use MC68HC05X32 adapter
	MC68HC05E6	⚙	

Notes: ⚙Already Support, ●Support Soon



MFRS	TYPE	SUPPORT	REMARK
MOTOROLA MC68HC(9) 08	MC68HC08AB16A_EEP	⊗	
	MC68HC08ASxx_EEP	⊗	Support R&W secured chip
	MC68HC08ASxxA_EEP	⊗	Support R&W secured chip
	MC68HC08AZxx_EEP	⊗	Support R&W secured chip
	MC68HC08AZxxA_EEP	⊗	Support R&W secured chip
	MC68HC908ABxx_EEP	⊗	Support R&W secured chip
	MC68HC908ASxx_EEP	⊗	Support R&W secured chip
	MC68HC908ASxxA_EEP	⊗	Support R&W secured chip
	MC68HC908ASxxA_FLASH	⊗	Support R&W secured chip
	MC68HC908AZxx_EEP	⊗	Support R&W secured chip
	MC68HC908AZxxA_EEP	⊗	Support R&W secured chip
	MC68HC908AZxxA_FLASH	⊗	Support R&W secured chip
	MC68HC908AZxxE_EEP	⊗	Support R&W secured chip
	MC68HC908AZxxE_FLASH	⊗	Support R&W secured chip
	MC68HC908GRxx	⊗	Support R&W secured chip
	MC68HC908GTxx	⊗	Support R&W secured chip
	MC68HC908GZxx	⊗	Support R&W secured chip
	MC68HC908LJxx	⊗	Support R&W secured chip
MC68HC908LKxx	⊗	Support R&W secured chip	

Notes: ⊗Already Support, ●Support Soon

MFRS	TYPE	SUPPORT	REMARK
MOTOROLA MC68HC (9) 12	MC68HC12BC32	☼	
	MC68HC12BE32	☼	
	MC68HC912B32	☼	
	MC68HC912BC32	☼	
	MC68HC912BD32	☼	Support R&W secured chip
	MC912D60A	☼	Support R&W secured chip
	MC912DG128	☼	Support R&W secured chip
	MC912DG128A	☼	Support R&W secured chip
	MC912DT128	☼	Support R&W secured chip
	MC912DT128A	☼	Support R&W secured chip
	MC912DT128P	☼	Support R&W secured chip

Notes: ☼Already Support, ●Support Soon

MFRS	TYPE	SUPPORT	REMARK
MOTOROLA MC9S08	MC9S08AC	☼	
	MC9S08AW	☼	
	MC9S08DN	☼	
	MC9S08DV	☼	
	MC9S08DZ	☼	
	MC9S08EL	☼	
	MC9S08FL	☼	
	MC9S08GB	☼	
	MC9S08GW	☼	
	MC9S08GT	☼	
	MC9S08JE	☼	
	MC9S08JM	☼	
	MC9S08JS	☼	
	MC9S08LC	☼	
	MC9S08LG	☼	
	MC9S08LH	☼	
	MC9S08LL	☼	
	MC9S08MM	☼	
	MC9S08MP	☼	
	MC9S08QA	☼	
	MC9S08QB	☼	
	MC9S08QD	☼	
	MC9S08QE	☼	
	MC9S08QG	☼	
	MC9S08RC	☼	
	MC9S08RD	☼	
	MC9S08RE	☼	
	MC9S08RG	☼	
	MC9S08SC	☼	
	MC9S08SE	☼	
	MC9S08SF	☼	
	MC9S08SG	☼	
MC9S08SH	☼		
MC9S08SL	☼		
MC9S08SU	☼		
MC9S08SV	☼		

Notes: ☼Already Support, ●Support Soon

MFRS	TYPE	SUPPORT	REMARK
MOTOROLA MC9S12	MC9S12A	☺	Support R&W secured chip
	MC9S12B	☺	Support R&W secured chip
	MC9S12C	☺	Support R&W secured chip
	MC9S12D	☺	Support R&W secured chip
	MC9S12DB	☺	Support R&W secured chip
	MC9S12DG	☺	Support R&W secured chip
	MC9S12DJ	☺	Support R&W secured chip
	MC9S12DP	☺	Support R&W secured chip
	MC9S12DT	☺	Support R&W secured chip
	MC9S12G	☺	Support R&W secured chip
	MC9S12GA	☺	Support R&W secured chip
	MC9S12GC	☺	Support R&W secured chip
	MC9S12GN	☺	Support R&W secured chip
	MC9S12HA	☺	
	MC9S12HY	☺	
	MC9S12HZ	☺	Support R&W secured chip (3L16Y)
	MC9S12KG	☺	Support R&W secured chip (2L33V)
	MC9S12KT	☺	Support R&W secured chip (2L33V)
	MC9S12VR	☺	
	MC9S12P	☺	
	MC9S12XA	☺	Support R&W secured chip
	MC9S12XB	☺	Support R&W secured chip
	MC9S12XD	☺	Support R&W secured chip
	MC9S12XDP	☺	Support R&W secured chip
	MC9S12XDQ	☺	Support R&W secured chip
	MC9S12XDT	☺	Support R&W secured chip
	MC9S12XEA	☺	Support R&W secured chip, auto detect data size
	MC9S12XEG	☺	Support R&W secured chip, auto detect data size
	MC9S12XEP	☺	Support R&W secured chip, auto detect data size
	MC9S12XEQ	☺	Support R&W secured chip, auto detect data size
	MC9S12XET	☺	Support R&W secured chip, auto detect data size
	MC9S12XHY	☺	
	MC9S12XHZ	☺	Support R&W secured chip
MC9S12XS	☺		
MC9S12XF	☺	Support R&W secured chip, auto detect data size	
MC9S12ZVP	☺		
MC9S12ZVC	☺		

	MC9S12ZVH	⚙	
	MC9S12ZVM	⚙	

Notes: ⚙ Already Support, ● Support Soon



MFRS	TYPE	SUPPORT	REMARK
NXP PCF79XX	PCF7922	☺	Need PCF79XX adapter
	PCF7941	☺	Need PCF79XX adapter
	PCF7945	☺	Need PCF79XX adapter
	PCF7952	☺	Need PCF79XX adapter
	PCF7953	☺	Need PCF79XX adapter
	PCF7961	☺	Need PCF79XX adapter

Notes: ☺Already Support, ●Support Soon



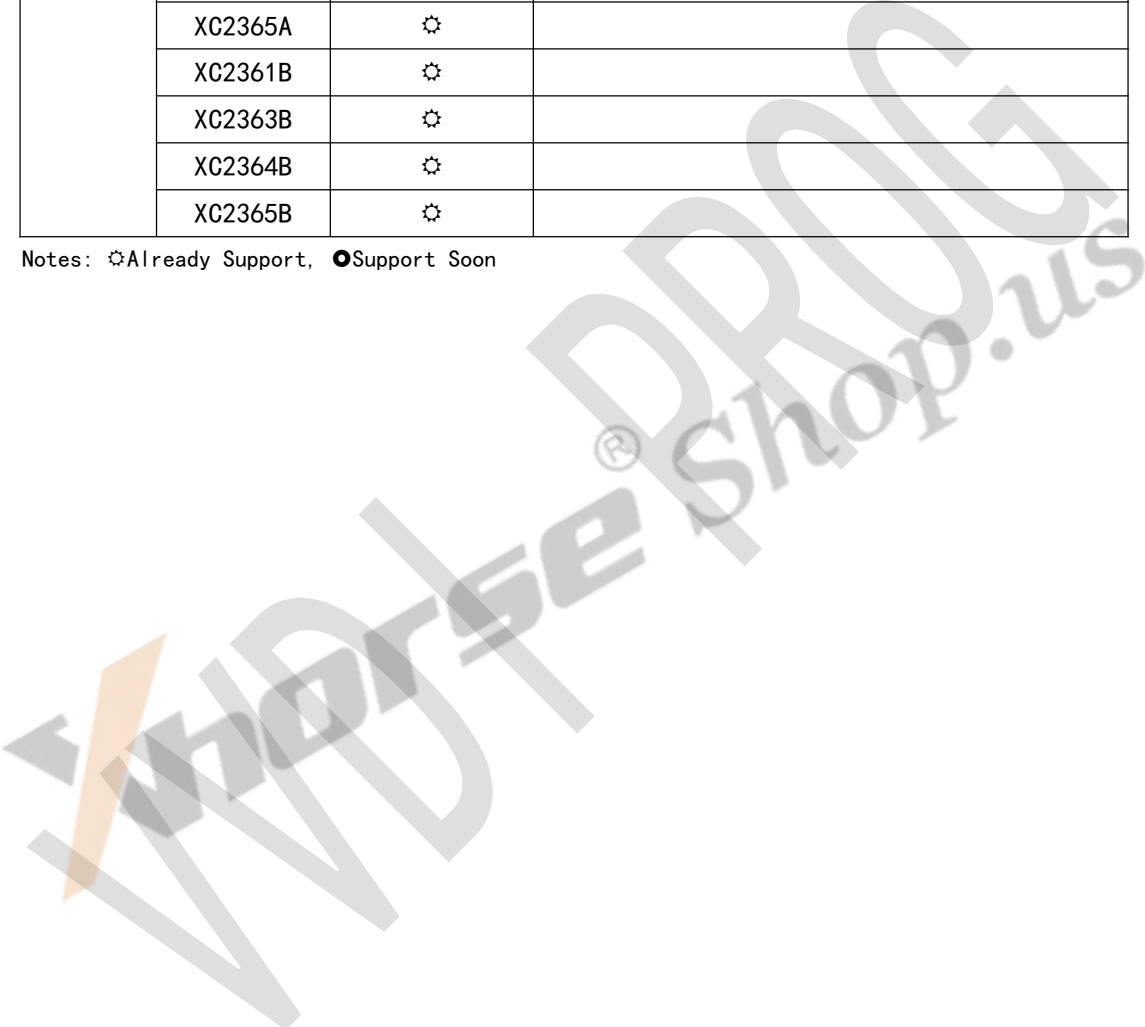
MFRS	TYPE	SUPPORT	REMARK
ST ST10F	ST10F269	⚙	
	ST10F272	⚙	
	ST10F275	⚙	
	ST10F276	⚙	
	ST10F280	⚙	

Notes: ⚙Already Support, ●Support Soon



MFRS	TYPE	SUPPORT	REMARK
INFINEON XC2XXX	XC2060M	☺	
	XC2060N	☺	
	XC2336A	☺	
	XC2336B	☺	
	XC2361A	☺	
	XC2363A	☺	
	XC2364A	☺	
	XC2365A	☺	
	XC2361B	☺	
	XC2363B	☺	
	XC2364B	☺	
	XC2365B	☺	

Notes: ☺ Already Support, ● Support Soon



MFRS	TYPE	SUPPORT	REMARK
ATMEL ATMEGA XXXX	ATMEGA48xx	☺	48/48P/48PB
	ATMEGA8	☺	
	ATMEGA88xx	☺	88/88P/88PB
	ATMEGA16xx	☺	16/162/164/164P/168 (P/PB) /169 (P)
	ATMEGA32xx	☺	32/323/324 (P/PB) /325 (P) /3250 (P) / 328 (P/PB) /329 (P/PB) /3290 (P)
	ATMEGA64xx	☺	64/644 (P) /645 (P) /6450 (P) /649 (P) /6490 (P)
	ATMEGA103	☺	
	ATMEGA128x	☺	128/1280/1281
	ATMEGA256x	☺	2560/2561

Notes: ☺Already Support, ●Support Soon

MFRS	TYPE	SUPPORT	REMARK
INFINEON	XC164CS-16F	⚙	
XC164CS	XC164CS-32F	⚙	

Notes: ⚙Already Support, ●Support Soon



MFRS	TYPE	SUPPORT	REMARK
MICROCHIP PIC18F	PIC18F6520	☺	
	PIC18F6620	☺	
	PIC18F6720	☺	
	PIC18F8520	☺	
	PIC18F8620	☺	
	PIC18F252	☺	
	PIC18F242	☺	
	PIC18F442	☺	
	PIC18F452	☺	
	PIC18F248	☺	
	PIC18F258	☺	
	PIC18F448	☺	
	PIC18F458	☺	
	PIC18F1220	☺	
	PIC18F2220	☺	
	PIC18F4220	☺	
	PIC18F1320	☺	
	PIC18F2320	☺	
	PIC18F4320	☺	
	PIC18F1230	☺	
	PIC18F1330	☺	
	PIC18F2221	☺	
	PIC18F4221	☺	
	PIC18F4321	☺	
	PIC18F2321	☺	
	PIC18F2331	☺	
	PIC18F4331	☺	
	PIC18F2431	☺	
	PIC18F4431	☺	
	PIC18F2423	☺	
	PIC18F4423	☺	
	PIC18F2523	☺	
	PIC18F4523	☺	
	PIC18F23K20	☺	
PIC18F43K20	☺		
PIC18F24K20	☺		
PIC18F44K20	☺		

	PIC18F25K20	⚙	
	PIC18F45K20	⚙	
	PIC18F26K20	⚙	
	PIC18F46K20	⚙	
	PIC18F13K22	⚙	
	PIC18F14K22	⚙	
	PIC18F2480	⚙	
	PIC18F4480	⚙	
	PIC18F2580	⚙	
	PIC18F4580	⚙	
	PIC18F2455	⚙	
	PIC18F4455	⚙	
	PIC18F2550	⚙	
	PIC18F4550	⚙	
	PIC18F2525	⚙	
	PIC18F4525	⚙	
	PIC18F2620	⚙	
	PIC18F4620	⚙	
	PIC18F8720	⚙	
MICROCHIP PIC12F	PIC12F635	⚙	
	PIC12F683	⚙	
	PIC12F508	⚙	
	PIC12F509	⚙	
	PIC12F510	⚙	
	PIC12F519	⚙	
	PIC12F609	⚙	
	PIC12HV609	⚙	
	PIC12HV615	⚙	
	PIC12F615	⚙	
	PIC12F617	⚙	
	PIC12F1571	⚙	
	PIC12(L)F1571	⚙	
	PIC12(L)F1572	⚙	
	PIC12F1572	⚙	
	PIC12F1612	⚙	
	PIC12F1822	⚙	
	PIC12F1840	⚙	
	PIC12F752	⚙	
MICROCHIP	PIC16F631	⚙	

PIC16F	PIC16F636	⚙	
	PIC16F639	⚙	
	PIC16F677	⚙	
	PIC16F684	⚙	
	PIC16F685	⚙	
	PIC16F687	⚙	
	PIC16F688	⚙	
	PIC16F689	⚙	
	PIC16F690	⚙	
	PIC16F505	⚙	
	PIC16(L)F1823	⚙	
	PIC16(L)F1824	⚙	
	PIC16(L)F1825	⚙	
	PIC16(L)F1826	⚙	
	PIC16(L)F1827	⚙	
	PIC16(L)F1828	⚙	
	PIC16(L)F1829	⚙	
	PIC16(L)F1847	⚙	
	PIC16(L)F1613	⚙	
	PIC16(L)F1614	⚙	
	PIC16(L)F1615	⚙	
	PIC16(L)F1618	⚙	
	PIC16(L)F1619	⚙	
	PIC16(L)F1508	⚙	
	PIC16(L)F1509	⚙	
	PIC16(L)F1503	⚙	
	PIC16(L)F1507	⚙	
	PIC16F610	⚙	
	PIC16F616	⚙	
	PIC16HV610	⚙	
	PIC16HV616	⚙	
	PIC16(L)F1512	⚙	
	PIC16(L)F1513	⚙	
	PIC16(L)F1516	⚙	
	PIC16(L)F1517	⚙	
	PIC16(L)F1518	⚙	
	PIC16(L)F1519	⚙	
	PIC16(L)F1526	⚙	
	PIC16(L)F1527	⚙	

PIC16(L)F1713	⚙	
PIC16(L)F1716	⚙	
PIC16(L)F1717	⚙	
PIC16(L)F1718	⚙	
PIC16(L)F1719	⚙	
PIC16(L)F1703	⚙	
PIC16(L)F1704	⚙	
PIC16(L)F1705	⚙	
PIC16(L)F1707	⚙	
PIC16(L)F1708	⚙	
PIC16(L)F1709	⚙	
PIC16(L)F18313	⚙	
PIC16(L)F18323	⚙	
PIC16(L)F18324	⚙	
PIC16(L)F18344	⚙	
PIC16(L)F17325	⚙	
PIC16(L)F17345	⚙	
PIC16(L)F18326	⚙	
PIC16(L)F18346	⚙	
PIC16F72	⚙	
PIC16F54	⚙	
PIC16(L)F1946	⚙	
PIC16(L)F1936	⚙	
PIC16(L)F1937	⚙	
PIC16(L)F1933	⚙	
PIC16(L)F1934	⚙	
PIC16(L)F1938	⚙	
PIC16(L)F1939	⚙	
PIC16(L)F1947	⚙	
PIC16LF1906	⚙	
PIC16LF1907	⚙	
PIC16LF1903	⚙	
PIC16LF1904	⚙	
PIC16LF1902	⚙	
PIC16F707	⚙	
PIC16(L)F1454	⚙	
PIC16(L)F1455	⚙	
PIC16(L)F1459	⚙	
PIC16(L)F1554	⚙	

	PIC16(L)F1559	⚙	
	PIC16(L)F1566	⚙	
	PIC16(L)F1567	⚙	
	PIC16F506	⚙	

Notes: ⚙Already Support, ●Support Soon



MFRS	TYPE	SUPPORT	REMARK
FUJITSU MB91F	MB91F037	⚙	
	MB91F060	⚙	
	MB91F061	⚙	
	MB91F062	⚙	
	MB91F067	⚙	
	MB91F575	⚙	
	MB91F577	⚙	
	MB91F578C	⚙	
	MB91F579C	⚙	
	MB91F591B	⚙	
	MB91F592B	⚙	
	MB91F594B	⚙	
	MB91F596B	⚙	
	MB91F597B	⚙	
	MB91F599B	⚙	
	MB91F59AC	⚙	
	MB91F59BC	⚙	
FUJITSU MB90F	MB90F342	⚙	
	MB90F345	⚙	
	MB90F346	⚙	
	MB90F347	⚙	
	MB90F349	⚙	
	MB90F387	⚙	
	MB90F423	⚙	
	MB90F428	⚙	
	MB90F438	⚙	
	MB90F439	⚙	
	MB90F455	⚙	
	MB90F456	⚙	
	MB90F457	⚙	
	MB90F462	⚙	
	MB90F497	⚙	
	MB90F498	⚙	
	MB90F523	⚙	
MB90F543	⚙		
MB90F546	⚙		
MB90F548	⚙		

	MB90F549	⚙	
	MB90F553	⚙	
	MB90F594	⚙	
	MB90F654	⚙	
	MB90F867	⚙	
FUJITSU MB96F	MB96F348	⚙	
	MB96F385	⚙	
	MB96F386	⚙	
	MB96F387	⚙	
	MB96F673	⚙	
	MB96F675	⚙	
	MB96F683	⚙	
	MB96F685	⚙	
	MB96F693	⚙	
	MB96F695	⚙	
	MB96F696	⚙	
	MB96F6A5	⚙	
	MB96F6A6	⚙	

Notes: ⚙ Already Support, ● Support Soon

MFRS	TYPE	SUPPORT	REMARK
INFINEON TRICORE	TC1762-CAN	⚙	R&W via CAN
	TC1766-CAN	⚙	R&W via CAN
	TC1796-CAN	⚙	R&W via CAN

Notes: ⚙ Already Support, ● Support Soon



MFRS	TYPE	SUPPORT	REMARK
ST STM8	STM8AF5xxx	☼	
	STM8AF6xxx	☼	
	STM8AL31xx	☼	
	STM8AL3Lxx	☼	
	STM8L051xx	☼	
	STM8L052xx	☼	
	STM8L101xx	☼	
	STM8L151xx	☼	
	STM8L152xx	☼	
	STM8L162xx	☼	
	STM8S003xx	☼	
	STM8S007xx	☼	
	STM8S103xx	☼	
	STM8S105xx	☼	
	STM8S207xx	☼	
	STM8S208xx	☼	
STM8S903xx	☼		

Notes: ☼Already Support, ●Support Soon

MFRS	TYPE	SUPPORT	REMARK
MOTOROLA MPC560X	MPC560XB	☼	
	MPC560XC	☼	
	MPC560XD	☼	
	MPC560XE	☼	
	MPC560XP	☼	
	MPC560XS	☼	

Notes: ☼Already Support, ●Support Soon



MFRS	TYPE	SUPPORT	REMARK
ST SPC560X	SPC560XS	☼	
	SPC560BXX	☼	
	SPC560CXX	☼	
	SPC560DXX	☼	
	SPC560PXX	☼	
	SPC56APXX	☼	

Notes: ☼Already Support, ●Support Soon



MFRS	TYPE	SUPPORT	REMARK
ST	ST72 (F) 321XX	⚙	
ST7	ST72 (F) 521XX	⚙	

Notes: ⚙Already Support, ●Support Soon



MFRS	TYPE	SUPPORT	REMARK
TI TMS370	TMS370C002A	☺	Need TMS370 (PLCC28) Adapter
	TMS370C010A	☺	Need TMS370 (PLCC28) Adapter
	TMS370C012A	☺	Need TMS370 (PLCC28) Adapter
	TMS370C020A	☺	Need TMS370 (PLCC44) Adapter
	TMS370C022A	☺	Need TMS370 (PLCC44) Adapter
	TMS370C032A	☺	Need TMS370 (PLCC44) Adapter
	TMS370C040A	☺	Need TMS370 (PLCC44) Adapter
	TMS370C042A	☺	Need TMS370 (PLCC44) Adapter
	TMS370C050A	☺	Need TMS370 (PLCC68) Adapter
	TMS370C052A	☺	Need TMS370 (PLCC68) Adapter
	TMS370C056A	☺	Need TMS370 (PLCC68) Adapter
	TMS370C058A	☺	Need TMS370 (PLCC68) Adapter
	TMS370C256A	☺	Need TMS370 (PLCC68) Adapter
	TI MSP430	MSP430F1xx2	☺
MSP430F13x		☺	
MSP430F14xx		☺	
MSP430F15xx		☺	
MSP430F16xx		☺	
MSP430F21x		☺	
MSP430F23x		☺	
MSP430F24x		☺	
MSP430F24x		☺	
MSP430F43x		☺	
MSP430F44x		☺	
MSP430F47X		☺	

Notes: ☺ Already Support, ● Support Soon

7.Support Model List

7.1. ECU

MFRS	TYPE	SUPPO RT	REMARK	
BENZ	W203 (AM29F400BB)	⚙		
BMW E SERIES	MEVD17 (N55)	⚙		
	MEVD1724 (N20)	⚙		
	MEVD1726 (N55)	⚙		
	MEVD1729 (N20)	⚙		
BMW F SERIES	MEVD172 (N55)	⚙		
	MEVD1724 (N20)	⚙		
	MEVD1725 (N13)	⚙		
	MEVD1726 (N55)	⚙		
	MEVD1728 (N63/S63)	⚙		
	MEVD1729 (N20)	⚙		
	MEVD172G (N55)	⚙		
	MEVD172P (N20)	⚙		
BOMBARDIER	QUADROCYCLE (2011)	⚙		
CHANGAN	BENBEN MT20UED	⚙		
	ME20U2-XET256	⚙		
	ME20U2-XET512	⚙		
	MT20U2-MC912DT128P	⚙		
	MT20U2-2L33V	⚙		
	DELPHI	MT20UED	⚙	
	MT22-XEP768	⚙		
	MT60-XEP768	⚙		
	MT60 (TC1766)	⚙		
MT80 (TC1766)	⚙			
HYUNDAI	HYUNDAI (2005-2008)	⚙	(R&W AM29BDD160GB and 29F400)	
	SONATA (2009-2010)	⚙	(R&W S29CD016Jand 29F400)	
KIA	KIA (2005-2008)	⚙	(R&W AM29BDD160GB and 29F400)	
	ME17. 9. 11. 1 (TC1762)	⚙		
MAGNETI	I AW 4AC. A4	⚙		

MARELLI	I AW-6LP2. 03	⚙	
	I AW-6LPA. 01	⚙	
	I AW-6LPB (ST10F280)	⚙	
PEUGEOT	405 (ST10F271)	⚙	
RENAULT	MODUS-XC164CS-32F	⚙	
	EMS3134 (29F400BB)	⚙	
VOLKSWAGEN	EDC17_CP14 (TC1796)	⚙	
	ME7. 5. 20 (ST10F275)	⚙	
	MED17. 1 (TC1766)	⚙	
	MED17. 5 (TC1766)	⚙	
	MED17. 5. 20 (TC1766)	⚙	
	SIMOS9. 4 (AM29F400BB)	⚙	
OTHER	CNG (2010-2014)	⚙	
	XP8000E-XET256	⚙	
BOSCH	ME7	⚙	
	ME7. 4. 4	⚙	(R&W 29F400 and 95160)
	ME7. 4. 5	⚙	(R&W ST10F275 and 95320)
	ME7. 4. 9NG	⚙	(R&W ST10F275 and 95320)
	ME7. 9. 7. 1	⚙	
	MG7. 9. 8	⚙	
SIEMENS	EMS6104 (AM29F400BB)	⚙	
	SIMTEC76 (29F400BB)	⚙	

7.2. IMMOBILIZER

MFRS	TYPE	SUPPORT	REMARK
AUDI	BCM2	⚙	(D70F3379/3380/3381/3634)
	A4L-BCM	⚙	(1L15Y)
	J518 (---2010)	⚙	(1L59W/3L40K)
	J518 (2010--)	⚙	(0L01Y)
	KESY (2008--)	⚙	
BENZ	EIS-W203	⚙	(HC08)
	EIS-W220	⚙	(HC08)
	EIS-W639	⚙	(HC08)
	EIZ-W203	⚙	(HC12)
	EIZ-W209	⚙	(HC12)
	EIZ-W211	⚙	(HC12)
	EIZ-W219	⚙	(HC12)
	EIZ-W220	⚙	(HC12)
	EIZ-W230	⚙	(HC12)
	EIZ-W164	⚙	(ST12)
	EIZ-W169	⚙	(ST12)
	EIZ-W203	⚙	(ST12)
	EIZ-W209	⚙	(ST12)
	EIZ-W211	⚙	(ST12)
	EIZ-W215	⚙	(ST12)
	EIZ-W219	⚙	(ST12)
	EIZ-W220	⚙	(ST12)
	EIZ-W221	⚙	(ST12)
	EIZ-W230	⚙	(ST12)
	EIZ-W463	⚙	(ST12)
	EIZ-W906	⚙	(ST12)
	EIZ VANE0	⚙	(ST12)
	EIZ MAYBACH	⚙	(ST12)
	EIZ SPRINTER (2015--)	⚙	(ST12)
SPRINTER-IMMOBOX (2002-2005)	⚙		
HC05E6_REMOTE (0F82B)	⚙		
BMW	EWS3 (0D46J)	⚙	Need EWS3 adapter
	EWS4. X	⚙	
	MOTORCYCLE (2016)	⚙	
	CAS1	⚙	(0K50E)

	CAS2	⚙	(2K79X/0L01Y)
	CAS3	⚙	(2K79X/0L01Y)
	CAS3+	⚙	(0L15Y/0M23S)
	CAS4	⚙	(1L15Y)
	CAS4	⚙	(5M48H/1N35H)
CHANGAN	CS75-BODY-COMPUTER	⚙	
JEEP	WRANGLER-BCM (2013)	⚙	
BAIC MOTOR	BJ40-BCM (2016)	⚙	
	E150-BCM	⚙	
	HUANSU-S3-BCM	⚙	
	SENOVA-D50-BCM	⚙	
HYUNDAI	ELANTRA-KGB-MODULE	⚙	(MC9S12XEG384)
	IX35 (2015) (MC9S12XD256)	⚙	

MFERS	TYPE	SUPPORT	REMARK
CHEVROLET	CRUZE-BCM (D70F3385)	⚙	
	NEWSA I LBCM (2013--)	⚙	
	EPI CA_ BCM (--2009)	⚙	(Support read PASSWORD)
	SAIL_ IMMOBOX (--2009)	⚙	(Support read PASSWORD)
STEC	STEC IMMOBILIZER	⚙	
CHRYSLER	300C	⚙	
	DODGE-JOURNEY-WIN (2010)	⚙	
FIAT	BSI	⚙	
	PANDA_BSI_1L40K	⚙	
	FIAT IMMOBILIZER	⚙	
FORD	BCM-7S7T	⚙	1L15Y
GM	BCM3	⚙	
	KEYLESS-ENTRY-MODULE (2009--)	⚙	
GREATWALL	DELPHI-IMMOBILIZER	⚙	
	H2-BCM	⚙	
	HAVAL-H9-BCM (D70F3632)	⚙	
GEELY	EC820-BCM	⚙	
INFINITI	BCM-XDT384	⚙	
	BCM-XEG384	⚙	
LANDROVER	BCM (2009--)	⚙	(MC9S12XEP768/XEP100)
	RANGE ROVER EWS (2004-08)	⚙	
	DISCOVER3-CEM	⚙	
	RANGE ROVER SPORT-CEM	⚙	
LUXGEN	BIG7-ICU (HC908GZ32)	⚙	
JAGUAR	SMARTKEY-0L01Y	⚙	
NISSAN	BCM-XDT384	⚙	
	BCM-XEG384	⚙	
OPEL	ASTRADG128	⚙	
	ZAFIRADG128	⚙	
	VECTRA (2004-08)	⚙	
	OPEL_ IMMOBOX (--2009)	⚙	(Support read PASSWORD)
PORSCHE	BCM-1L15Y	⚙	
	BCM-2M25J	⚙	
	BCM-5M48H	⚙	
	BCM-1N35H	⚙	
RENAULT	BCM-XDT384	⚙	
	BCM-XEG384	⚙	

	LAGUNABCM (2010--)	⚙	
	LAGUNA UCT (2006)	⚙	
	MEGANE-UCH	⚙	
SAIC MOTOR	MG7	⚙	
	MG-GS-BCM (2017)	⚙	
	ROEWE750	⚙	
VOLKSWAGEN	BCM-XEQ384	⚙	
	BCM2	⚙	(D70F3379/3380/3381/3634)
	KESY (2008--)	⚙	
	JETTA_IMMOBOX (--2008)	⚙	(Support read PASSWORD)
VOLVO	XC60-REVIEW-MIRROR	⚙	
	KVM	⚙	
ZHONGHUA	H530-BCM-V1	⚙	
FAW	BESTURN-B70-BCM	⚙	(MC9S12XEG128)
	BESTURN-B90-BCM	⚙	
	JIEFANG-J6-HCS300	⚙	
	JIEFANG-J6-BCM	⚙	
BUICK	EXCELLE BCM (2013--)	⚙	
	EXCELLEGTBCM (2013--)	⚙	
	EXCELLE (2014)	⚙	
	EXCELLE-GT-BCM (D70F3385)	⚙	
	EXCELLE-GT-BCM (D70F3469)	⚙	
	LACROSSE-BCM (2008)	⚙	
	REGAL-KG-MODULE (2014)	⚙	
JEEP	GRAND-CHEROKEE-IMMO (0L72A)	⚙	
LEOPAARD	CS10-IMMO	⚙	
YEMA	T70-IMMO	⚙	
TUNGTHIH	IMMOBOX (STM8AF5268)	⚙	
	IMMOBOX (STM8AF6268)	⚙	
	IMMOBOX (STM8AF6288)	⚙	
SSANGYONG	IMMOBOX (MSP430F1232)	⚙	

7.3. DASHBOARD

MFRS	TYPE	SUPPORT	REMARK
BUICK	EXCELLE (2010)	⚙	
	EXCELLE (2011-12)	⚙	
	EXCELLE (2013-15)	⚙	
	EXCELLEGT (D70F3423)	⚙	
	EXCELLEGT (D70F3529)	⚙	
	GL8-FIRSTLAND (2007)	⚙	
	LACROSSE (2008)	⚙	
CHANGAN	BENBEN	⚙	
	JINNIUXING	⚙	
	S35	⚙	
	YUEXIANG	⚙	
	ALSVIN-V3 (2012)	⚙	
	ALSVIN-V5 (2014)	⚙	
	ALSVIN-V7 (2017)	⚙	
	CHANGAN-STAR-3 (2016)	⚙	
	CHANGAN-STAR-9	⚙	
	CS35 (2015)	⚙	
	CS35 (2016)	⚙	
	CS75 (2014)	⚙	
	EADO	⚙	
	EADO (2015)	⚙	
	EULOVE (2014)	⚙	
	RUIXING	⚙	
	CX20 (2012)	⚙	
	GOD-ANGEL (2015)	⚙	
	HONOR	⚙	
	OUZHANG (2017)	⚙	
RAETON (2013)	⚙		
XINBAO (MC9S08LG16)	⚙		
CHANGCHENG	FENGJUN-6	⚙	
CHERY	ARRIZ07	⚙	
	ARRIZ07 (2015)	⚙	
	ARRIZ0-M7	⚙	
	E5-3L16Y	⚙	
	EQ-DASHBOARD (2017)	⚙	

	NEW QQ	⚙	
	TIGGO5 (MB91F594BS)	⚙	
CHEVROLET	AVEO	⚙	
	CAPTIVA (2008)	⚙	
	CAPTIVA (2011)	⚙	
	CRUZE (D70F3423)	⚙	
	MALIBU (D70F3426)	⚙	
DAYUN	AUTOPLEAD-DASHBOARD (2017)	⚙	
DONGFENG	VENUCIA-D50	⚙	
	VENUCIAR50 (2014)	⚙	
	XIAOKANG (2014)	⚙	
	XIAOKANG (2015)	⚙	
	FENGGUANG (2016)	⚙	
	FXAUTO-LZ	⚙	
	LINGZHI_M5 (2016)	⚙	(MC9S12HY64)
FAW	BESTURN-B50	⚙	
	BESTURN-B90 (2014)	⚙	
	BESTURN-X80	⚙	
	BESTURN-X80 (2013)	⚙	
	JIEFANG (3L16Y)	⚙	
	VITA (2008)	⚙	
FORD	DASHBORAD (SPC5604S)	⚙	
	DASHBORAD (SPC5606S)	⚙	
	FIESTA	⚙	
	FIESTA (3L16Y)	⚙	
	FOCUS (2005)	⚙	
	FOCUS (09-10)	⚙	
	FOCUS-C-MAX (2009)	⚙	
	KUGA (3L16Y)	⚙	
	MONDEO (2004-07)	⚙	
	MONDEOCHIA-X (2009)	⚙	
	S-MAX (2008)	⚙	
FOTON	NU-NING	⚙	
GEELY	YINGLUN (2012)	⚙	
	BORUI (2014-)	⚙	
	EMGRAND	⚙	
GREAT WALL	C30 (2010)	⚙	
	H5-1M80F	⚙	
	HAVAL-H6	⚙	

HAFEI	LOB0 (2008)	⚙	
KIA	K5 (2017)	⚙	
TOYOTA	TOYOTA (2014-)	⚙	
HANTENG	X7 (2016)	⚙	
GACMOTOR	TRUMPCHI-GA6 (2015)	⚙	
	TRUMPCHI-GS4	⚙	
BAICMOTOR	SENOVA-D50	⚙	
	SENOVA-D60	⚙	
	SENOVA-D70	⚙	
	B40	⚙	
	BJ40-DASHBOARD	⚙	
	E130	⚙	
	E150-DASHBOARD (2014)	⚙	
	EX200-BCM (2016)	⚙	
BORGWARD	BORGWARD (2017)	⚙	
LANDROVER	FREELANDER (2004)	⚙	
LEOPAARD	CS10	⚙	
VOLKSWAGEN	BEETLE-DASHBOARD (2005)	⚙	
	BEETLE-DASHBOARD (2010)	⚙	
	POLO	⚙	
	LAVIDA_DASHBOARD	⚙	(D79F3422)
SAG	DELONG	⚙	
KARRY	K50-DASHBOARD (2015)	⚙	
HYUNDAI	VERNA (D70F3421)	⚙	

MFERS	TYPE	SUPPORT	REMARK
HAIMA	FAMILY (2011-13)	⚙	
HONDA	HONDA (2014-)	⚙	
JAC	IEV-DASHBOARD (2017)	⚙	
	REFINE-S5	⚙	
	REFINE (2017)	⚙	
JAGUAR	S-SERIES	⚙	
JINBEI	JINBEI (2015)	⚙	
JMC	LANDWIND-X8	⚙	
	LANDWIND-X7	⚙	
LUXGEN	LUXGEN	⚙	
NISSAN	QASHQAI (2011)	⚙	
	QUEST (2006)	⚙	
SAIC MOTOR	BAOJUN330	⚙	
	BAOJUN630	⚙	
	BAOJUN630 (2015)	⚙	
	BAOJUN730	⚙	
	BAOJUN730 (2015)	⚙	
	ROEWE550	⚙	
	SAIC MAXUS-RV (2014)	⚙	
	SAIC MAXUS-RV (2015)	⚙	
	WULING HONGGUANG-S	⚙	
	SGMW-HONGGUANG	⚙	
	SGMW-WULING ZHIGUANG	⚙	
	SGMW-RONGGUANG	⚙	
	MG3 (2016)	⚙	
	MG6	⚙	
MG-GT-DASHBOARD (2014)	⚙		
SUZUKI	RAYCH (2011)	⚙	
VOLVO	C70 (2011)	⚙	
	S40 (2006-08)	⚙	
	S40 (2010)	⚙	
	S80 (2009)	⚙	
	XC60 (2012)	⚙	
	XC60 (2014)	⚙	
	XC60-HIGH-EQUIPPED (2014)	⚙	
XC60 (2016)	⚙		
ZHONGHUA	FSV (2010-)	⚙	

	H330	⚙	
	V5 (2008)	⚙	
ZOTYE	DOMY-X5 (2015)	⚙	
	SR7	⚙	
	T600 (2015)	⚙	
	Z300 (2013)	⚙	
	Z500 (2015)	⚙	



7.4. REMOTE

MFRS	TYPE	SUPPORT	REMARK
BMWESERIES	ORIGINAL 315	⚙	Need PCF79XX adapter
	ORIGINAL868	⚙	Need PCF79XX adapter
	THIRDPARTY	⚙	Need PCF79XX adapter
BMW F SERIES	315 REMOTE	⚙	Need PCF79XX adapter
	433 REMOTE	⚙	Need PCF79XX adapter
	868 REMOTE	⚙	Need PCF79XX adapter

7.5. AIRBAG

MFRS	TYPE	SUPPORT	REMARK
BUICK	EXCELLEGT-SRS	⚙	
	GL8-SRS (2015)	⚙	
	REGAL-SRS (2014)	⚙	
	REGAL-SRS (MC9S12XEG384)	⚙	
BOSCH	AB12CL (R7F701A033)	⚙	
CHANGAN	ALSVIN-SRS	⚙	
	CS35 (2017)	⚙	
CHERY	RIICH-M1-SRS	⚙	
CHEVROLET	NEW-SAIL-SRS (2016)	⚙	
CITROEN	ELYSEE-SRS (D70F3624)	⚙	
FAW	BESTURN-B70-SRS	⚙	
	BESTURN-B70-SRS (D70F3623)	⚙	
FORD	ECOSPORT-SRS	⚙	
	ESCORT-SRS	⚙	
HONDA	ACCORD-SRS (SPC56AP54L3)	⚙	
	CITY-SRS (MPC5604P)	⚙	
	FIT (2015)	⚙	
HYUNDAI	SRS (XC2060M)	⚙	
	NEW-SANTAFE	⚙	
KIA	SRS (XC2060M)	⚙	
LANDROVER	DISCOVERY4-SRS	⚙	
LUXGEN	S3 (2018)	⚙	
OPEL	MAKKA-SRS (2015)	⚙	
PEUGEOT	2008-SRS	⚙	
	301-SRS (D70F3624)	⚙	
SAICMOTOR	LOVA-SRS	⚙	
VOLKSWAGEN	GOLF7-SRS	⚙	
	SRS-VW20 (SPC560P50L3)	⚙	
	SRS-VW20LE (SPC560P50L3)	⚙	
	SRS-VW51 (MC68HC908AZ60A)	⚙	
	SRS-VW52-V1	⚙	
	SRS-VW52-V2	⚙	
	SRS-VW61	⚙	
	VW21 (R7F7010713)	⚙	
OTHERS	PRIDE	⚙	

7.6. OTHER

MFRS	TYPE	SUPPORT	REMARK
AUDI	A4L-LEW-MODULE (2013)	⚙	
	A4L-LWR-MODULE (2010)	⚙	
	A6L-C6-AMP	⚙	
	A6L-C7-EPB-MODULE	⚙	
	A8L-AMB-MODULE (2011)	⚙	
	ESL-HC08GR16-V1	⚙	
	ESL-HC08GR16-V2	⚙	
BENZ	FC-OPERATION-UNIT-W221	⚙	
	A205-CHASSIS	⚙	
	ISM-W221	⚙	
	ISM (ST10F269)	⚙	
	KG-MODULE-W221	⚙	Two Version
	LU-W221	⚙	
	REAR-SAM-W212	⚙	
	SAM-W221	⚙	
	W204-FRONT-SAM-MODULE	⚙	
	W221-AIR-CONTROLLER	⚙	
	W221-SEAT-COMPUTER	⚙	
	W221-FRONT-SAM-COMPUTER	⚙	
	S-CLASS-W221-FRONT-SAM	⚙	
	PTS-W221	⚙	
	TRCM-W221	⚙	
BMW	580-SEAT-MODULE	⚙	
	AIRBAG-F-CHASSIS	⚙	
	DKG-MODULE (2008)	⚙	
	FRM-E-SERIES-XEQ384	⚙	
	FRM-F-SERIES-XET512	⚙	
	E60-KBM	⚙	
	PDC-MODULE	⚙	
	F-SERIES-SZL-MODULE	⚙	
	X5-LCM	⚙	
	FRM-F-SERIES-XDP512	⚙	
	FRM-F-SERIES-XEP100	⚙	
BUICK	GL8-KG-MODULE	⚙	
CHANGAN	RAETON-HVAC-MODULE (2013)	⚙	

	RAETON-KG-MODULE (2013)	⚙	
CHEVROLET	CRUZE-CD-PLAYER	⚙	
CITROEN	GEARBOX (29F200BB)	⚙	
CHRYSLER	300C-PDC-MODULE (2007--)	⚙	
DONGFENG	FENGGUANG580-KG-MODULE	⚙	
FORD	FOCUS-BCM	⚙	
FIAT	VIAGGIO (D70F3628)	⚙	
GREATWALL	HVAC-MODULE (2015)	⚙	
	HAVAL-H9-4WD-MODULE	⚙	
HYUNDAI	IX35-ASSY-SMARTKEY-UNIT	⚙	
NISSAN	X-TRAIL-PMM	⚙	
JEEP	TRUCK-LOCK-MODULE (2014--)	⚙	
LANDROVER	ATCM	⚙	
	EVOQUE-EPB-MODULE (2013)	⚙	
	RFA	⚙	
MAZDA	RUIYI-KG-MODULE (2009)	⚙	
VOLKSWAGEN	GATEWAY (XC2060M-104)	⚙	
	GOLF6-PDC-MODULE	⚙	
	MAGOTAN-EPB-MODULE (2013)	⚙	
	LEW-MODULE	⚙	
	NEW-JETTA-PDB-MODULE	⚙	
	NEW-SANTANA-PDB-MODULE	⚙	
	PASSATB6-PBCM	⚙	
	PASSAT-PDC-MODULE	⚙	
	REAR-VIEW-CAMERA (D70F3356)	⚙	
	WINDOW-MOTOR-OM01N	⚙	
	TIGUAN-KG-MODULE	⚙	(MC9S12XET256)
RENAULT	CL103-EPS-XC164CS-32F	⚙	
	CL103-EPS-ST10F269	⚙	
ROVER	RFA	⚙	
SACHS	CDC-XC164CS-16F	⚙	
SAICMOTOR	MG_GT_ELEC_POWER_UNIT1 (2017)	⚙	
	MG_GT_ELEC_POWER_UNIT2 (2017)	⚙	
KIA	SORENTO-IPM	⚙	
PORSCHE	POWER-AMPLIFIER	⚙	